



DISTRIBUTION



DYNAMIC BUFFET



DYNAMIC BUFFET

Warm elements	297
Cold elements	299
Neutral elements	300
Accessories	302

DYNAMIC BUFFET

FAGOR INDUSTRIAL DYNAMIC BUFFET

- In the world of display and service, Fagor Industrial, presents its product, "Dynamic Buffet". The range of components that make up this new product serves to cover the existing needs in the field of "free flows", "buffets", "show cooking" and even "self service". It combines sound technology, a good and customized image, and at the same time a studied implementation.

And with the "Dynamic Buffet", that is achieved without the need to resort to special furniture and machinery.



- The range has been conceived so that, due to the wide versatility, the different possibilities can be easily combined. This applies to both height, countertop or above as well as decoration. Furthermore, by using the different available accessories, multiple versions can be obtained: both operational and esthetic ones.

- The modules can be made available and located frontally. In other words, they are supported from behind (envelopes with support by trays on one side), joined to the wall, or like central islands (envelopes with support by trays on both sides).

- They allow for the possibility of placing them separately as independent units; or join them in straight sections, diagonally or in different geometric shapes due to their particular design.

- The cash register unit's construction also allows it to be placed in the most suitable position.



CONSTRUCTION FEATURES

Units made of metal structure.

Each buffet table has a set of four spinning wheels. The support or fastening system is carried out with adjustable hexagonal tips located at the ends of the unit. The units are delivered with a wrench to raise or lower those fastening tips so that the unit is supported on the ground and the wheels remain raised.



The sides are made of 16 mm MDF (Medium Density Fibreboard), finished on the outside with texturized paint. The upper part of all sides has three orifices to attach auxiliary components to them: show cooking separator, electrical outlets, etc. These orifices are delivered with stainless steel trimming plugs

The decorative front panels are made of 19 mm MDF with high pressure laminated plating or texturized paint. They can be detachable.

The inner front panels all have a stainless steel screen that provides access to the inside of the unit, and it is prepared for housing the necessary control components.

Countertops (T) can be two kinds:

- built of AISI 304 stainless steel
- built from PHNP (non-porous homogeneous polymer material).

The following can be built into the units: protective shields with cold lighting, or with light and heat, side plate supporters, electrical outlets, etc. to adapt them better to their end use.

Finishes and colors

The choice and combination of colors can be made from all possibilities shown at the end of this chapter.

To do so, in the furniture coding that appears on the models' tables are reserved in the last two digits for the front panels (F) and side panels (L).



HOT BUFFET

HOT BUFFET TABLES WITH PAN, SHIELD AND LAMP

Hot buffet components with built-in pan equipped to house four 150 mm deep GN-1/1 containers.

Built with AISI 304 stainless steel with a shiny, polished finish, highly hygienic.

Heating through resistances located at the base of the pan with protection through perforated stainless steel screens. Digital thermostat-thermometer and activation switch. Voltage: 230 V - 1+N

Options of manufacturing it with access on both sides or access on a single side.

All units have a built-in protective shield with light and heat via protected halogen lamps in wall options (units with access on one side) and central (furniture with access on both sides).

Option to install plate rack on one or both sides.



EB-CC-1



EB-CC-2



SIDE PLATE RACK

A component that makes it possible to place it on the side of any plate rack. Capacity for three rows of plates with a diameter of 260 mm.

SHIELD AND HOT LIGHTING COMPONENT

Built-into all hot buffet components, in their one-sided or two-sided access versions.

HOT BUFFET FURNITURE WITH VITROCERAMIC PLATE, SHIELD AND LAMP

Hot buffet component with heating surface made of vitroceramic glass, dimensions: 4 x GN-1/1.

Built with AISI 304 stainless steel with a shiny, polished finish, highly hygienic.

Heating via resistances located at the base of the vitroceramic glass. Thermostat - digital thermometer and activation switch. Voltage: 230 V - 1+N

Options of manufacturing it with access on both sides or access on a single side.

All units have a built-in protective shield with light and heat via protected halogen lamps in wall options (units with access on one side) and central (furniture with access on both sides).

Option to install plate rack on one or both sides.



EB-PV-2



EB-PV-1

Model	Reference (*)	Unit			Power W	Dimensions mm	
		Table top	Accessibility	Element			
EB-CC-1	24001000FL	ST. STEEL	1 side	Hot pan	2.400+900	1.920x1.110x920	
	24001001FL	PHNP					
EB-CC-2	24001010FL	ST. STEEL	2 sides	Hot pan	2.400+900	1.920x1.330x920	
	24001011FL	PHNP					
EB-PV-1	24002000FL	ST. STEEL	1 side	Vitroc ceramic glass	1.800+900	1.920x1.110x920	
	24002001FL	PHNP					
EB-PV-2	24002010FL	ST. STEEL	2 sides	Vitroc ceramic glass	1.800+900	1.920x1.330x920	
	24002011FL	PHNP					

(*) Finishes and colors

The furniture coding that appears on the models' tables are reserved in the last two digits for the front panels (F) and side panels (L). Check table of finishes at end of chapter.

COLD BUFFET

COLD BUFFET TABLES WITH PAN, SHIELD AND LAMP

Cold buffet component with built-in pan equipped to house four 150 mm deep GN-1/1 containers.

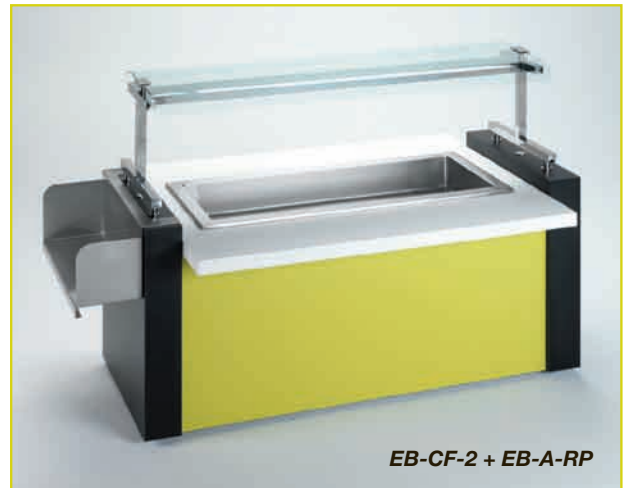
Built with AISI 304 stainless steel with a shiny, polished finish, highly hygienic.

Cooling via a copper coil expanded on the pan.
Digital thermostat-thermometer and activation switch.
Built-in refrigeration unit. Voltage: 230 V - 1+N

Options of manufacturing it with access on both sides or access on a single side.

All units come with a built-in protective shield with protected fluorescent lamps. They come in a wall option (units with access on one side) and a central option (units with access on both sides).

Option to install plate rack on one or both sides.



BUFFET TABLE WITH COLD PAN AND REFRIGERATED DISPLAY WINDOW

Built with AISI 304 stainless steel with a shiny, polished finish, highly hygienic.

Open on the customer's access side.
Closed upper part with curved tempered glass.
Sides with 8 mm tempered glass.
Folding rear doors with double panes with chamber and microperforated transparent polycarbonate pneumatic conveyor.

Fluorescent lighting with protection.

Insulated pan with ventilated cooling, capacity: 4 x GN-1/1 depth 200 mm.

The pan has an adjustable height.
Evaporator guard may be lifted for cleaning.
Digital thermostat-thermometer and activation switch.
Built-in refrigeration unit. Voltage 230 V - 1+N.

Note: The cold pan built into the display window is 100 mm wider than the remaining plates and pans.



COLD BUFFET TABLES WITH COLD PLATE, SHIELD AND LAMP

Cold buffet component with cold plate on the envelope, dimensions: 4 x GN-1/1.

Built with AISI 304 stainless steel with a shiny, polished finish, highly hygienic.

Cooling via a copper coil expanded on the plate. Digital thermostat-thermometer and activation switch. Built-in refrigeration unit. Voltage: 230 V - 1+N

Options of manufacturing it with access on both sides or access on a single side.

All units come with a built-in protective shield with protected fluorescent lamps. They come in a wall option (units with access on one side) and a central option (units with access on both sides).

Option to install plate rack on one or both sides.



EB-PF-2

SIDE PLATE HOLDER SHELF

A component that makes it possible to place it on the side of any plate rack. Capacity for three rows of plates measuring Ø 260 mm. Built of 3 mm thick AISI 304 stainless steel with a shiny polished finish. Simple fastening system to the unit's sides.



EB-PF-1 + EB-A-RP

Model	Reference (*)	Unit			Power W	Dimensions mm	
		Table top	Accessibility	Element			
EB-CF-1	24003000FL	ST. STEEL	1 side	Cold pan	250 + 36	1.920x1.110x920	
	24003001FL	PHNP					
EB-CF-2	24003010FL	ST. STEEL	2 sides	Cold pan	250 + 36	1.920x1.330x920	
	24003011FL	PHNP					
EB-PF-1	24004000FL	ST. STEEL	1 side	Cold plate	250 + 36	1.920x1.110x920	
	24004001FL	PHNP					
EB-PF-2	24004010FL	ST. STEEL	2 sides	Cold plate	250 + 36	1.920x1.330x920	
	24004011FL	PHNP					
EB-VF-1	24005000FL	ST. STEEL	1 side	Cold plate and display case	1.300 + 36	1.920x1.110x920	
	24005001FL	PHNP					

(*) Finishes and colors

The furniture coding that appears on the models' tables are reserved in the last two digits for the front panels (F) and side panels (L). Check table of finishes at end of chapter.

NEUTRAL BUFFET

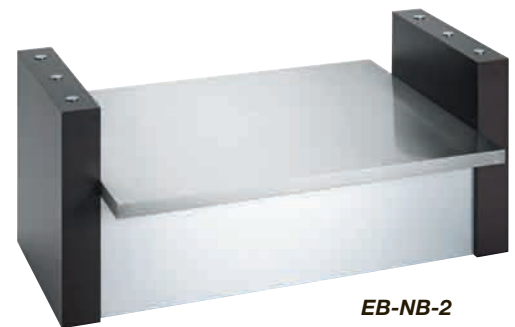
HIGH AND LOW BUFFET FURNITURE

Due to the different coupling components and accessories, different buffet components can be designed for a wide variety of applications.

Options of manufacturing it with access on both sides or access on a single side.
Two countertop height options: 600 mm and 850 mm.

With the option of installing protective shields and hot and cold light components, in wall options (furniture with access from one side) and central (furniture with access on both sides).

Option to install a plate rack on one or both sides as well as electrical outlets for plugging in electrical appliances



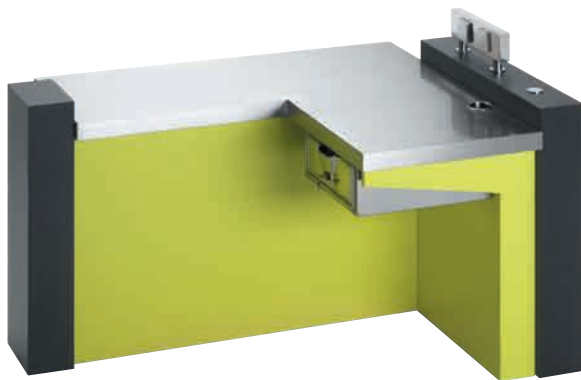
Model	Reference (*)	Unit			Power W	Dimensions mm	
		Table top	Accessibility	Element			
EB-NA-1	24000000FL	ST. STEEL	1 side	Worktop 850 mm	*	1.920x1.110x920	
	24000001FL	PHNP					
EB-NA-2	24000010FL	ST. STEEL	2 sides	Worktop 850 mm	*	1.920x1.330x920	
	24000011FL	PHNP					
EB-NB-1	24000100FL	ST. STEEL	1 side	Worktop 600 mm	*	1.920x1.110x920	
	24000101FL	PHNP					
EB-NB-2	24000110FL	ST. STEEL	2 sides	Worktop 600 mm	*	1.920x1.330x920	
	24000111FL	PHNP					
EB-MC	24006000FL	ST. STEEL	1 side	Cash register Worktop 850 mm	*	1.920x1.110x920	
	24006001FL	PHNP					

Note: Power will depend on the lighting supports installed.

(*) Finishes and colors

The furniture coding that appears on the models' tables are reserved in the last two digits for the front panels (F) and side panels (L). Check table of finishes at end of chapter.

CASH REGISTER COMPONENT



EB-MC

Optional accessory:

“IMPULSE SHOPPING” SHELVES

Retail display shelves to be placed on the side of the cash register.
Made of AISI 304 stainless steel plate.
Simple fastening system to the side of the cash register furniture unit.



LOW NEUTRAL BUFFET - SHOW COOKING ASSEMBLY

Low buffet unit **EB-NB-1**.

Built with access on one side.

They offer the possibility of placing cooking or work components or modules on them to create “show cooking”.

Example: four “1/2 module” appliances of the 600 Series.

To do so, it has an auxiliary component that covers and protects the cooking appliances at the rear. (“Separator”).

Stainless steel guards may also be used at the sides.



LOW NEUTRAL BUFFET - DISPENSER UNIT



There is also the option to couple the dispensers, thus achieving a unit devoted to holding trays, flatware, glasses and bread. These dispensers are made of AISI-304 stainless steel (18/10) with side supports on a square section measuring 40x40 mm with a bright polished finish.

- The flatware dispenser-bread dispenser has GN 150 mm deep polycarbonate receptacles :

- one 1/1-GN receptacle for bread
- two 1/2-GN receptacles for bread
- three 1/3GN receptacles for flatware

- The glass dispenser has three tilted display levels with anti-roll folds on the front panel for so the glasses are always in the first row in the user’s reach.

On the buffet countertop, between the dispenser supports, it is possible to place the trays, napkins, plastic tablecloths or paper...

ACCESSORY COMPONENTS

DISPLAY SHIELDS

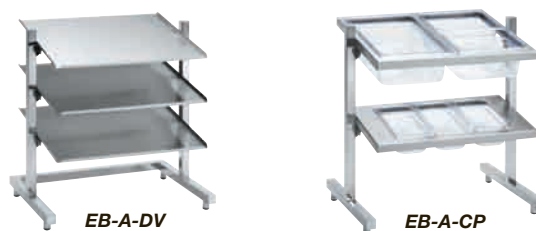
To be placed over food display areas.
Made of AISI 304 stainless steel with a shiny polished finish.
Tempered glass measuring 6 mm with anti-breath curve on one or two sides, fastened with clamps to the shield structure.
They have two side feet that are simply fastened to the side of the furniture with a glass attachment system via clamps.
The shields can incorporate a lighting component (through protected fluorescent lamps) or for lighting and heat (through protected halogen lamps).



DISPENSERS: Flatware-Bread Dispenser and Glass Dispenser

Made of AISI-304 stainless steel (18/10) with side supports on a square section measuring 40x40 mm with a bright polished finish.
The flatware dispenser-bread dispenser has GN 150 mm deep polycarbonate receptacles:

- one GN-1/1 receptacle and two GN-1/2 receptacles for bread
- three GN-1/3 receptacles for flatware



BASE FOR ELECTRICAL CONNECTIONS

Component that can be incorporated in neutral units with two electric outlets to plug in different types of appliances: toasters, juicers, juice makers, coffee makers, water heater... Also for plugging in the "show cooking" appliances: grills, ceramic hobs, fryers, bains-marie...
Built of AISI 304 stainless steel with side PVC lids.
Simple fastening system to the side of neutral furniture.
Electrical outlets with protective cover.



EB-A-BC

SIDE PLATE HOLDER SHELF

A component that makes it possible to place it on the side of any plate rack. Capacity for three rows of plates measuring Ø 260 mm.
Built of 3 mm thick AISI 304 stainless steel with a shiny polished finish.
Simple fastening system to the unit's sides.



EB-A-RP

SEPARATOR and SIDE GUARDS

for show cooking



EB-A-SS

"IMPULSE SHOPPING" SHELVES

Retail display shelves to be placed on the side of the cash register.
Made of AISI 304 stainless steel plate.
Simple fastening system to the side of the cash register furniture unit.



EB-A-VI

Model	Reference	Accessories	Dimensions mm	
EB-A-SS	2401000000	Show cooking separator	1.900x395	
EB-A-SPD	2401000001	Right side guard for show cooking		
EB-A-SPI	2401000002	Left side guard for show cooking		
EB-A-DV	2401100000	Glass dispenser - 3 trays	790x600x760	
EB-A-CP	2401200000	Flatware - bread dispenser	790x600x760	
EB-A-RP	2401300000	Side plate rack	800x260x340	
EB-A-LF1	2401400000	Support with cold light - 36 W - access on one side	1.790x485x475	
EB-A-LF2	2401500000	Support with cold light - 36 W - access on both sides	1.790x600x475	
EB-A-LC1	2401600000	Support with hot light - 900 W - access on one side	1.790x485x475	
EB-A-LC2	2401700000	Support with hot light - 900 W - access on both sides	1.790x600x475	
EB-A-VI	2401800000	Shelves for impulse shopping	800x160x560	
EB-A-BC	2401900000	Base for electrical connections		

FINISH AND COLOR CODING

In defining the furniture, the relevant code reserves the last two digits to select the finishes and colors corresponding to the furniture's covering:

- F : Front panels:**
- Colors**
- Aluminum
 - Black
 - Light brown
 - Dark brown
 - Orange
 - Pistachio

- L : Side Panels :**
- Colors**
- Black
 - Light brown
 - Dark brown

Elements	Digits	Material - color	F	L
Countertop		Stainless steel	0	
		PHNP	1	
Front panels	F	Aluminium	0	
		Black	1	
		Light brown	2	
		Dark brown	3	
		Orange	4	
Side panels	L	Black		1
		Light brown		2
		Dark brown		3



EXAMPLE:

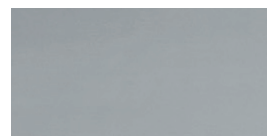
Buffet table with cold pan, with access on one side and PHNP countertop:

General code on the table: 24003001FL

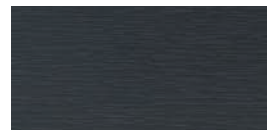
- Black front panel: F = 1
- Light brown side panels: L = 2

Complete furniture code: 2400300112

COLORS



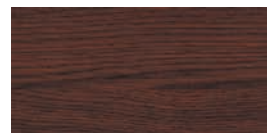
ALUMINIUM



BLACK



LIGHT BROWN



DARK BROWN



ORANGE



PISTACHIO

