

## REFRIGERATION - CONCEPT LINE



### COMMERCIAL REFRIGERATION CONCEPT LINE - OTHER PRODUCTS

Display cabinets	270
Display cabinets for wine	272
Back bar refrigerated displays	274
Front bar chest coolers	275
Refrigerated displays and cases	276
Countertop display trays	278
Ice makers	280
Coffe counters and shelves	283

The special models with group on the left, or any other variant out of standard may be fitted in the factory, and the price will have an increment on the suitable standard price.

## WHITE SERIES DISPLAY CABINETS

### WHITE SERIES DISPLAY CABINETS

Free standing refrigerated display merchandiser.  
 Exterior of plastic-coated steel, white color.  
 Illuminated logo/advertising panel included (ERVC models).  
 Glass doors with vacuum chamber on anodised aluminium frame.  
 Internal lighting.  
 Internal shelves of plastic-coated steel, adjustable in height.  
 Injected polyurethane insulation, 40 kg/m<sup>3</sup> density. No CFC.  
 Forced draught.  
 R-134 cooler. No CFC.  
 Removable, ventilated airtight compressor.  
 Evaporator integrated in aluminium plate.  
 Automatic evaporation of water during defrosting.  
 Operating temperature: +4 °C, +8 °C, at room temperature of 32 °C.  
 Electronic temperature and defrosting control and display.  
 Operating voltage 230 V - 1+N - 50/60 Hz.



**ERV-400**

**ERVC-400**

Model	Reference	Display	Doors	Capacity litres	Electricity Power-W	Refrig, Power-W	Dimensions mm	
<b>ERVC-400</b>	142113700000	YES	1	440	529	338	620x655x2.000	
<b>ERV-400</b>	142113120000	NO	1	440	529	338	620x655x1.850	
<b>ERVC-1000</b>	142113900000	YES	2 sliding	1.000	600	680	1.250x700x2.000	

## WHITE SERIES DISPLAY CABINETS

### WHITE SERIES DISPLAY - COUNTER TOP MODELS

Similar features to the Display Cabinets



**ERVC-100**



**ERV-180**

Model	Reference	Display	Racks	Capacity litres	Electricity Power-W	Refrig, Power-W	Dimensions mm	
<b>ERVC-100</b>	142113500000	YES	1	60	276	140	440x480x850	
<b>ERV-100</b>	142113100000	NO	1	60	276	140	445x470x700	
<b>ERVC-180</b>	142113600000	YES	2	130	391	174	505x570x1.100	
<b>ERV-180</b>	142113110000	NO	2	130	391	174	505x570x950	

142113500000  
 142113100000  
 142113600000  
 142113110000

# DISPLAY CABINETS FOR WINE

## REFRIGERATED DISPLAY CABINET FOR WINE

External construction in epoxy painted steel, walnut color.  
 Doors with automatic locking device.  
 Glass doors with vacuum chamber on anodised aluminium frame.  
 Internal shelves adjustable in height.  
 Internal lighting.  
 Injected polyurethane insulation 40 kg/m<sup>3</sup> density. No CFC.  
 Ventilated evaporator, in aluminium plate.  
 R-134 cooler. No CFC.  
 Removable, ventilated airtight compressor.  
 Copper evaporator with aluminium fins.  
 Automatic evaporation of water during defrosting.  
 Work cycles: see the indicated cycles (#), at room temperature of 32 °C.  
 Electronic temperature and defrosting control and display.  
 Illuminated general switch.  
 Operating voltage: 230 V - 1N - 50 or 60 Hz.



AEV-2



AEV-1

Model	Reference	Doors	Racks	Capacity bottles (*)	Electricity Power-W	Refrig, Power-W	Dimensions mm	
AEV-1	142113140000	1 small	2	40	185	174	505x570x950	
AEV-2	142113150000	1 big	4	195	280	222	620x655x1.860	

(\*) Bottles of 75 cl

(#) Work cycles :

### AEV-1M:

- Two cycles (selector in the rear part):
- White wine (+ 5 °C in the whole cupboard)
- Red wine (+ 16 °C in the whole cupboard)

### AEV-2M & AEV-22M :

- Three cycles (selector in the rear part):
- White wine (+ 5 °C in the whole cupboard)
- Red wine (+ 16 °C in the whole cupboard)
- **Mixed**, for white wine on the low part (+ 5 °C) and red wine on the upper part (+ 16 °C).

## REFRIGERATED DISPLAY CABINET FOR WINE - EXTERNAL CASE IN WOOD

External case with panels of waterproof wood -MDF-, in walnut color.  
 Doors with automatic locking device.  
 Glass doors with vacuum chamber on anodised aluminium frame.  
 Internal shelves adjustable in height.  
 Internal lighting.  
 Injected polyurethane insulation 40 kg/m<sup>3</sup> density. No CFC.  
 Ventilated evaporator, in aluminium plate.  
 R-134 cooler. No CFC.  
 Removable, ventilated airtight compressor.  
 Copper evaporator with aluminium fins.  
 Automatic evaporation of water during defrosting.  
 Work cycles: see the indicated cycles (#), at room temperature of 32 °C.  
 Electronic temperature and defrosting control and display.  
 Illuminated general switch.  
 Operating voltage: 230 V - 1N - 50 or 60 Hz.



AEV-2M

AEV-1M

Model	Reference	Doors	Racks	Capacity bottles (*)	Electricity Power-W	Refrig, Power-W	Dimensions mm
AEV-1M	142113160000	1 small	2	40	174	185	530x595x965
AEV-2M	142113170000	1 big	5	195	222	280	650x650x1.900
AEV-22M	142113180000	2 big	10	390	222+222	280+280	1.305x650x1.900

(\*) Bottles of 75 cl

(#) Work cycles :

### AEV-1M:

- Two cycles (selector in the rear part):
- White wine (+ 5 °C in the whole cupboard)
- Red wine (+ 16 °C in the whole cupboard)

### AEV-2M & AEV-22M :

- Three cycles (selector in the rear part):
- White wine (+ 5 °C in the whole cupboard)
- Red wine (+ 16 °C in the whole cupboard)
- **Mixed**, for white wine on the low part (+ 5 °C) and red wine on the upper part (+ 16 °C).



AEV-22M

## BACK BAR REFRIGERATED DISPLAYS

### BACK BAR BOTTLE CHILLERS

Exterior of plastic-coated steel in black color.  
 Glass doors with vacuum chamber on anodised aluminium frame,  
 18 mm thickness.  
 Interior in galvanized steel painted in epoxy.  
 Internal lighting.  
 Lock door (except for ERMS-250 model).  
 Equipment: 4 shelves by module.  
 Polyurethane insulation.  
 Density 40 kg/m<sup>3</sup>. No CFC.  
 R-134 cooler. No CFC.  
 Removable, ventilated airtight compressor.  
 Copper evaporator with aluminium fins.  
 Fans of the evaporator: 120 x 120 mm.  
 Operating temperature: +4°C, +8 °C,  
 at room temperature of 32 °C.  
 Electronic temperature and defrosting control and display.  
 Operating voltage: 230 V - 1N - 50 or 60 Hz.

**ERMS-250** : model with sliding doors



**ERM-150**

Model	Reference	Doors	Racks	Capacity		Electricity Power-W	Refrig, Power-W	Dimensions mm	
				litres	bottles				
<b>ERM-150</b>	141211100000	1	2	135	96	276	140	600x520x900	
<b>ERM-250</b>	141211200000	2	2x2	190	156	400	250	900x520x900	
<b>ERMS-250</b>	141211210000	2 slid.	2x2	190	156	400	250	900x520x900	
<b>ERM-350</b>	141211300000	3	3x2	295	240	450	300	1.350x520x900	



**ERM-250**

## FRONT BAR CHEST COOLERS & GLASS FROSTERS

### FRONT BAR CHEST COOLERS

Internal sides of stainless steel.  
 Interior depth with rounded edges  
 and adjustable vertical separators.  
 Right hand unit.  
 Polyurethane insulation.  
 Density 40 kg/m<sup>3</sup>. No CFC.  
 Removable, ventilated airtight compressor.  
 R-134 A coolant. No CFC.  
 Copper evaporator with aluminium fins.  
 Static refrigeration.  
 Operating temperature: +2 °C, +6 °C,  
 at room temperature of 32 °C.  
 Adjustable temperature by thermostat.  
 Operating voltage: 230 V - 1N - 50 or 60 Hz.



Model	Reference	Separator grids	Doors	Capacity litres	Electricity Power-W	Refrig, Power-W	Dimensions mm	
<b>BFP-100 I</b>	143001710000	1	2	202	250	250	1.015x550x850	
<b>BFP-150 I</b>	143001010000	2	3	420	250	250	1.500x550x850	
<b>BFP-200 I</b>	143001110000	3	4	580	250	250	2.000x550x850	
<b>BFP-250 I</b>	143001210000	4	5	720	350	300	2.500x550x850	
<b>BFP-300 I</b>	143001310000	5	6	860	385	500	3.000x550x850	

### FRONT BAR CHEST COOLERS, "GONDOLA" SERIES

External case made of white Skinplate.  
 Internal sides of galvanized.  
 Interior with adjustable vertical separators.  
 Lower unit.  
 Polyurethane insulation.  
 Density 40 kg/m<sup>3</sup>. No CFC.  
 Removable, ventilated airtight compressor.  
 R-134 A coolant. No CFC.  
 Copper evaporator with aluminium fins.  
 Static refrigeration.  
 Operating temperature: +2 °C, +6 °C,  
 at room temperature of 32 °C.  
 Adjustable temperature by thermostat.  
 Operating voltage: 230 V - 1N.



Model	Reference	Separator grids	Doors	Capacity litres	Electricity Power-W	Refrig, Power-W	Dimensions mm	
<b>BEG-100</b>	14300171000_	1	2	137	150	150	1.017x545x840	
<b>BEG-150</b>	14300101000_	2	3	230	199	199	1.510x545x840	
<b>BEG-200</b>	14300111000_	3	4	314	236	236	2.023x545x840	

# REFRIGERATED DISPLAY COUNTERS

## REFRIGERATED DISPLAY COUNTERS

Stainless steel doors and interior.

“- I -” Models: Exterior with anodised aluminium profile.

“- M -” Models: Waterpro of wooden exterior.

Injected polyurethane insulation. Density 40 kg. No CFC.

Rear doors with automatic lock and fixing opening.

Internal shelves of plastic-coated steel.

Internal lighting.

Removable, ventilated airtight compressor.

R-134 A coolant. No CFC.

Copper evaporator with aluminium fins.

Static refrigeration.

Automatic evaporation of water during defrosting.

Operating temperature: +2 °C, +6 °C,

at room temperature of 32 °C.

Temperature control and electronic defrosting

with indicator display.

Operating voltage: 230 V - 1N - 50 or 60 Hz.



VC-14-M

Model	Reference	Doors	Racks	Capacity litres	Electricity Power-W	Refrig, Power-W	Dimensions mm	
VC-14-I	147210000000	2	2	280	616	500	1.380x800x1.075	
VC-14-M	147110000000	2	2	280	616	500	1.380x800x1.075	
VC-20-I	147220000000	3	2	430	704	500	1.980x800x1.075	
VC-20-M	147120000000	3	2	430	704	500	1.980x800x1.075	



VC-20-I



VC-14-I

## WALL MOUNTED DISPLAY CASES

Stainless steel, with mirror interior.

“- I -” **Models:** Exterior with anodised aluminium profile.

“- M -” **Models:** Waterpro of wooden exterior.

Two sliding glass doors. Internal shelves of glass.

Stainless steel lower tray for GN-1/3 40 mm depth (not included).

Internal lighting.

Removable, ventilated airtight compressor.

R-134 A coolant. No CFC.

Copper evaporator with aluminium fins. Static refrigeration.

Automatic evaporation of water during defrosting.

Operating temperature: +4 °C, +8 °C, at room temperature of 32 °C.

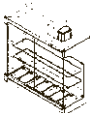
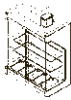
Temperature control and electronic defrosting with indicator display.

Operating voltage: 230 V - 1N - 50 or 60 Hz.



**VM-100-M**

Model	Reference	Doors	GN cont.(*)	Capacity litres	Electricity Power-W	Refrig, Power-W	Dimensions mm	
<b>VM-100-I</b>	147310000000	2	5	150	396	297	983x570x1.120	
<b>VM-100-M</b>	147410000000	2	5	150	396	297	983x570x1.120	
<b>VM-135-I</b>	147320000000	2	7	210	396	500	1.333x570x1.120	
<b>VM-135-M</b>	147420000000	2	7	210	396	500	1.333x570x1.120	



(\*) : Containers not included



**VM-100-M**



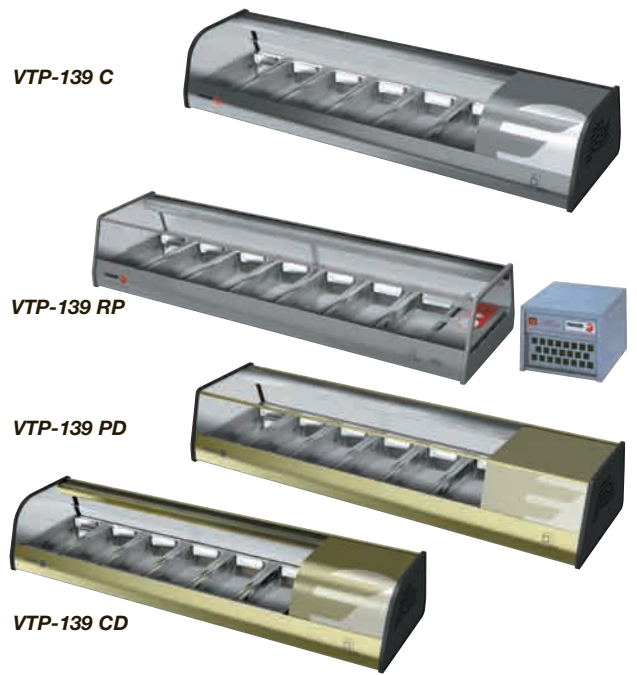
**VM-135-I**

# REFRIGERATED DISPLAY TRAYS

## REFRIGERATED DISPLAY TRAYS

Made of stainless steel, with anodised aluminium profile.  
 Glass sliding doors. PVC sides.  
 Protected internal lightning.  
 Injected polyurethane insulation. Density 40 Kg. No CFC.  
 Ventilated airtight compressor.  
 R-134 A coolant. No CFC.  
 Cold plate, static refrigeration.  
 Operating temperature: +4 °C, +8 °C, at room temperature of 32 °C.  
 Thermostat temperature control with indicator thermometer.  
 Illuminated general switch.  
 Operating voltage: 230 V - 1N - 50 or 60 Hz.

**Important:**  
 1/3 GN trays depth 40 mm included.  
 Remote unit included in models "R"



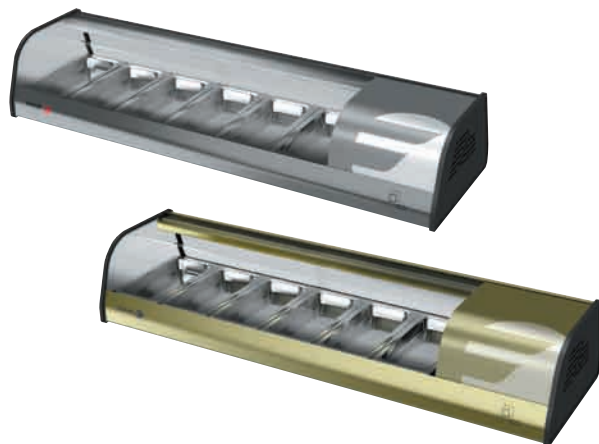
Model	Reference	Glass	Color	GN-1/3 cont.	Group	Electricity Power-W	Refrig. Power-W	Dimensions mm	
VTP-139 P	144112100000	P	G	6	I	345	150	1.395x400x250	
VTP-139 C	144112200000	C	G	6	I	345	150	1.395x400x250	
VTP-175 P	144112300000	P	G	8	I	368	150	1.750x400x250	
VTP-175 C	144112400000	C	G	8	I	368	150	1.750x400x250	
VTP-139 RP	144112500000	P	G	7	R	345	150	1.395x400x250	
VTP-139 RC	144112600000	C	G	7	R	345	150	1.395x400x250	
VTP-175 RP	144112700000	P	G	9	R	368	150	1.750x400x250	
VTP-175 RC	144112800000	C	G	9	R	368	150	1.750x400x250	
VTP-139 PD	144112110000	P	D	6	I	345	150	1.395x400x250	
VTP-139 CD	144112210000	C	D	6	I	345	150	1.395x400x250	
VTP-175 PD	144112310000	P	D	8	I	368	150	1.750x400x250	
VTP-175 CD	144112410000	C	D	8	I	368	150	1.750x400x250	
VTP-139 RPD	144112510000	P	D	7	R	345	150	1.395x400x250	
VTP-139 RCD	144112610000	C	D	7	R	345	150	1.395x400x250	
VTP-175 RPD	144112710000	P	D	9	R	368	150	1.750x400x250	
VTP-175 RCD	144112810000	C	D	9	R	368	150	1.750x400x250	

**D :** Models in gold color.  
**G :** Models in grey color.  
**P :** Models with flat glass.  
**C :** Models with curved glass.

**I :** Refrigeration unit on the right side.  
**R :** Built-in remote unit ( max. distance: 1,5 m).  
 Dimensions of the remote unit: 310x360x240 mm

## REFRIGERATED DISPLAY TRAYS FOR SHUSI

Made of stainless steel, with anodised aluminium profile.  
 Glass sliding doors. PVC sides.  
 Protected internal lightning.  
 Injected polyurethane insulation. Density 40 Kg. No CFC.  
 Ventilated airtight compressor.  
 Double cooling system. An evaporator in the base and another attached to the cover.  
 R-134 A coolant. No CFC.  
 Static refrigeration and refrigeration by conduction.  
 Operating temperature: +4 °C, +8 °C, at room temperature of 32 °C.  
 Thermostat temperature control with indicator thermometer.  
 Illuminated general switch.  
 Operating voltage: 230 V - 1N - 50 or 60 Hz.



Model	Reference	Color	GN-1/3 cont.	Electricity Power-W	Refrig, Power-W	Dimensions mm	
VTP-139 C - SHUSI	144112200025	G	6	287,5	206	1.395x400x250	
VTP-139 CD - SHUSI	144112210025	D					
VTP-175 C - SHUSI	144112400025	G	8	287,5	206	1.750x400x250	
VTP-175 CD - SHUSI	144112410025	D					



# ICE MAKERS

## CUBE ICE MAKERS WITH STORAGE BIN

The production system is simple and reliable, without electronic.

The unique spray nozzles, are made of a semi-elastic material that moves (expands) slightly every time a jet of water passes through it and does not allow calcareous build-up.

The pump, with materials that guarantee a long life, even in the worst water conditions. The machines are tropicalised (Class T) which means they work properly even in areas where the temperature is extremely high.

100% stainless steel body.

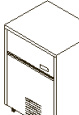
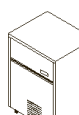
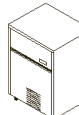
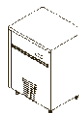
All models available in air or water cooled version.

Standard voltage: 220/50 Hz

Production figures at 15°C water temper. and 20°C air temp.

Refrigerant R404a

Water Inlet 3/4"



Model	Reference	Cube size	Production Kg/ day	Tank Kg	Condensation system	Power W	Dimensions mm
<b>FIM-20 A</b>	2151474020	17	22	6	Air	355	350x470x592
<b>FIM-20 W</b>	2151474025	17	22	6	Water	355	350x470x592
<b>FIM-30 A</b>	2151474030	40	32	13	Air	425	435x600x695
<b>FIM-30 W</b>	2151474035	40	35	13	Water	425	435x600x695
<b>FIM-40 A</b>	2151474040	40	39	13	Air	540	435x600x695
<b>FIM-40 W</b>	2151474045	40	40	13	Water	540	435x600x695
<b>FIM-55 A</b>	2151474050	40	52	26	Air	650	515x640x830
<b>FIM-55 W</b>	2151474055	40	54	26	Water	650	515x640x830
<b>FIM-80 A</b>	2151474080	40	76	32	Air	775	645x640x860
<b>FIM-80 W</b>	2151474085	40	78	32	Water	775	645x640x860
<b>FIM-110 A</b>	2151474090	40	105	55	Air	1.200	930x565x913
<b>FIM-110 W</b>	2151474095	40	110	55	Water	1.200	930x565x913
<b>FIM-150 A</b>	2151474000	40	150	75	Air	1.350	860x700x1.050
<b>FIM-150 W</b>	2151474005	40	156	75	Water	1.350	860x700x1.050

**GRANULAR ICE MAKERS WITH STORAGE BIN**

The range of crushed-ice produce granular ice with a vertical cylindrical evaporator and heavy duty auger mechanism.

The water content of the ice can be adjusted to suit every customer's requirements, it means that the machine can be adjusted to produce dumper or drier ice.

100% stainless steel body easy to remove. These models are supplied complete with water filter, scoop and ice distributor.

All models available in air or water cooled version.

- Standard voltage: 220/50 Hz (Available also at 220/60 Hz and 115/60 Hz).
- Production figures at 15°C water temper. and 20°C air temp.
- Refrigerant R404a
- Water Inlet 3/4"



Model	Reference	Production Kg/ day	Tank Kg	Condensation system	Power W	Dimensions mm	
<b>GIM-45 A</b>	2151474950	40	14	Air	460	405x515x750	
<b>GIM-45 W</b>	2151474955	42	14	Water	460	405x515x750	
<b>GIM-85 A</b>	2151474960	85	20	Air	533	465x595x790	
<b>GIM-85 W</b>	2151474965	88	20	Water	533	465x595x790	
<b>GIM-135 A</b>	2151474970	135	60	Air	640	515x550x1,355	
<b>GIM-135 W</b>	2151474975	139	60	Water	640	515x550x1,355	

**CUBE ICE MAKERS WITHOUT STORAGE BIN**

The production system is simple and reliable, without electronic.

The unique spray nozzles, are made of a semi-elastic material that moves (expands) slightly every time a jet of water passes through it and does not allow calcareous build-up. Pump with materials that guarantee a long life, even in the worst water conditions. The machines are tropicalised (Class T) which means they work properly even in areas where the temperature is extremely high.

100% stainless steel 18/8 body easy to dismantle

All models available in air or water cooled version.

Standard voltage: 220/50 Hz

Production figures at 15°C water temper. and 20°C air temp.

Refrigerant R404a

Water Inlet 3/4"



Model	Reference	Cube size	Production Kg/ day	Tank to install	Condens. system	Power W	Dimensions mm	
<b>MIM-145 A</b>	2151474900	40	130	S-200	Air	1.500	775x625x805	
<b>MIM-145 W</b>	2151474905	40	135	S-200	Water	1.500	775x625x805	

## ICE MAKERS

### GRANULAR ICE MAKERS WITHOUT STORAGE BIN

The range of crushed-ice produce granular ice with a vertical cylindrical evaporator and heavy duty auger mechanism.

100% stainless steel body easy to remove. These models are supplied complete with water filter, scoop and ice distributor.

All models available in air or water cooled version.  
Standard voltage: 220/50 Hz (Also available at 220/60 Hz and 115/60 Hz)  
Production figures at 15°C water temper. and 20°C air temp.  
Refrigerant R404a.  
Water Inlet ¾"



Model	Reference	Production Kg/ day	Tank to install	Condens. system	Power W	Dimensions mm	
<b>MIM-200 A</b>	2151474910	220	S-200 (x1) S-350 (x2)	Air	780	515x550x575	
<b>MIM-200 W</b>	2151474915	225	S-200 (x1) S-350 (x2)	Water	780	515x550x575	
<b>MIM-400 A</b>	2151474920	390	S-200 (x1) S-350 (x2)	Air	1.300	675x550x660	
<b>MIM-400 W</b>	2151474925	395	S-200 (x1) S-350 (x2)	Water	1.300	675x550x660	
<b>MIM-550 A</b>	2151474930	565	S-200 (x1) S-350 (x1)	Air	1.700	675x550x800	
<b>MIM-550 W</b>	2151474935	570	S-200 (x1) S-350 (x1)	Water	1.700	675x550x800	

### STORAGE BINS

An appropriate storage bin avoids space problems and saves work and space, moreover it guarantees an abundant stock of ice.

Ice storage bins are an essential element to cover any operation's peak.

One or two modular machines can be placed on one bin, depending on the model of the ice maker and the bin, there is even the possibility of placing on one bin an ice cube and a crushed-ice machine on the same bin or two ice makers, everyone with a different type of ice. These combinations allow the user to have a varied production of ice according to the requirements. Also the level of production can be regulated depending on the demand of ice, since it is possible to have one or two machines on operation.



Model	Reference	Capacity Kg	For the models:	Dimensions mm	
<b>S-200</b>	2151474991	200	MIM-145 / MIM-200 MIM-400 / MIM-550	760x800x1.030	
<b>S-350</b>	2151474992	350	2xMIM-200 / 2xMIM-400 1xMIM-550	1.430x700x1.030	

## BACK BAR COFFEE COUNTERS

Standard models with one shelf.  
 Possibility to add more shelves.  
 Possibility of being aligned with counters and shelves.  
 Drawers on ball bearing guides.  
 Removable hopper.  
 Adjustable legs.



*MMC-100 with optional shelf*

Model	Reference	Shelves	Drawers	Dimensions mm
<b>MMC-100</b>	140101000000 - Modul on the right	1	1	990x600x1.045
<b>MMC-100 I</b>	140101000003 - Modul on the left	1	1	990x600x1.045
<b>MMC-150</b>	140101100000	1	2	1.500x600x1.045
<b>MMC-200</b>	140101200000	1	2	2.025x600x1.045
<b>MMC-250</b>	140101300000	1	2	2.550x600x1.045

## SHELVES IN OPTION

Model	Reference	For Coffee Counter :
<b>EMMC-100</b>	140301000000	MMC-100 / MMC-150
<b>EMMC-200</b>	140301200000	MMC-200
<b>EMMC-250</b>	140301300000	MMC-250



*MMC-100*



*MMC-150*

## BACK BAR COFFE ELEMENTS

### COUNTER FRONT SHELVES

Models with one or two shelves.


Adjustable legs.

In option, kit neutral drawer for the models MME-60.



Model	Reference	Depth mm	Shelves	Dimensions mm	
MME-35/100	140002035000	350	1	990x350x1.045	
MME-35/100 2E	140002035030	350	2	990x350x1.045	
MME-35/150	140002135000	350	1	1.500x350x1.045	
MME-35/150 2E	140002135030	350	2	1.500x350x1.045	
MME-35/200	140002235000	350	1	2.025x350x1.045	
MME-35/200 2E	140002235030	350	2	2.025x350x1.045	
MME-35/250	140002335000	350	1	2.550x350x1.045	
MME-35/250 2E	140002335030	350	2	2.550x350x1.045	
MME-60/100	140002060000	600	1	975x600x1.045	
MME-60/100 2E	140002060030	600	2	975x600x1.045	
MME-60/150	140002160000	600	1	1.500x600x1.045	
MME-60/150 2E	140002160030	600	2	1.500x600x1.045	
MME-60/200	140002260000	600	1	2.025x600x1.045	
MME-60/200 2E	140002260030	600	2	2.025x600x1.045	
MME-60/250	140002360000	600	1	2.550x600x1.045	
MME-60/250 2E	140002360030	600	2	2.550x600x1.045	

**OTHER PRODUCTS**



For the models:	Accessorie	Reference	
<b>FRONT BAR CHEST COOLERS</b>	SEPARATOR GRID - Epoxi	14191170000	
	KIT 4 SUPPORTS	141911710000	
<b>WALL DISPLAY CASES</b>	GN-1/3 CONTAINER - 40 mm depth	2112016131	

